

# Appendix 2 - 2023/24 Q3

## ADULT SOCIAL CARE AND PUBLIC HEALTH

**Cabinet Member:** Councillor Debbie Andre

**Portfolio Responsibilities:**

- Community Care
- Residential Care
- Nursing Care
- Home Care
- Direct Payments
- Day Care
- Supported Living
- Learning Disability Homes
- Respite Care
- Resettlement
- Safeguarding
- Social Workers
- Family Working
- Healthy Lifestyles
- Domestic Abuse
- Early Help Services
- Obesity
- Sexual Health
- Substance Misuse
- 0-19 Services

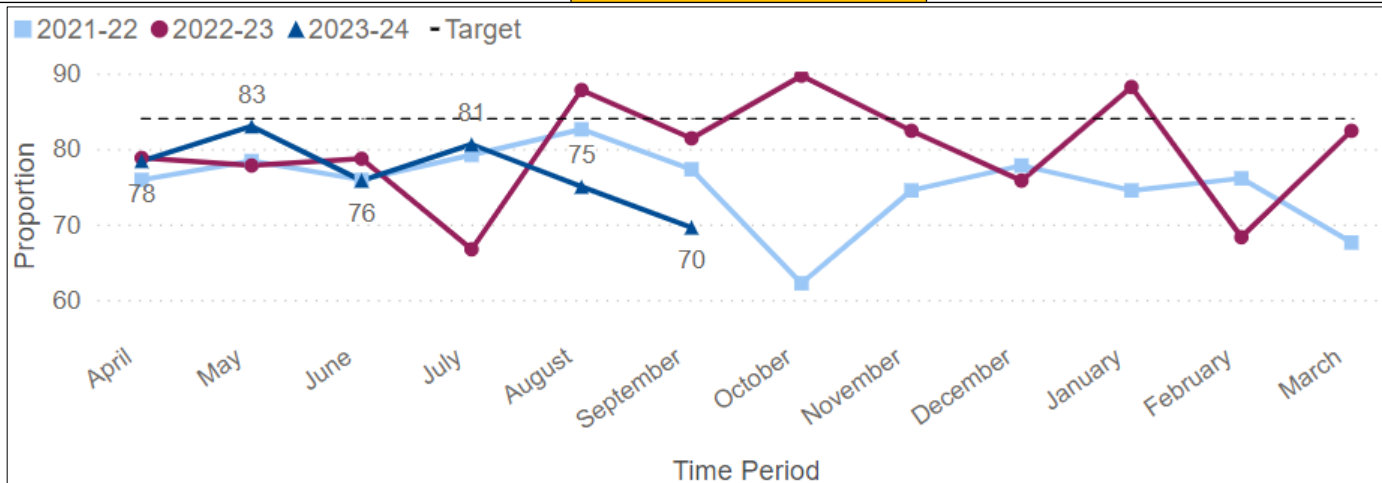
### Performance Measures

**Proportion of older people (65+) still at home 91 days after discharge from hospital into reablement/rehabilitation services**

**Aim:** The percentage of people still at home 91 days after discharge is above 84 percent.

**UN Sustainable Development Goal:** 3

<b>Most Recent Status:</b> September 2023	<b>AMBER</b>
<b>Previous Status:</b> June 2023	<b>AMBER</b>



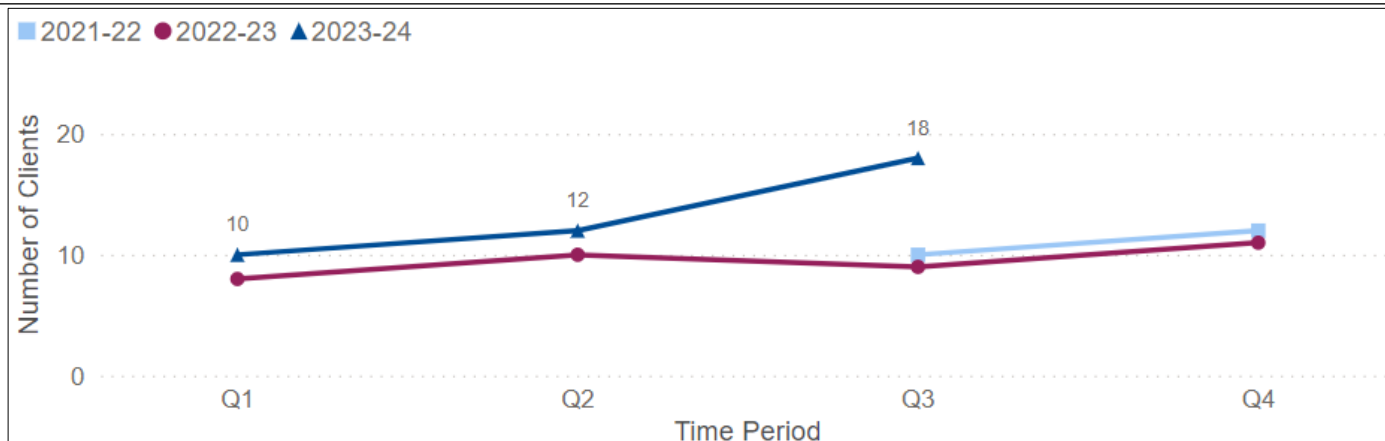
- 91 days data provided by Adult Social Care (ASC) Performance reporting will always be three months in arrears, due to the nature of the measure.
- Of the 14 people that were not at home after 91 days in September, ten people died and 4 were readmitted to hospital.

**Number of new ASC clients discharged from hospital progressing to short or long-term support at home, commissioned via Horizon.**

**Aim:** Monitoring Measure only.

**UN Sustainable Development Goal:** 3

<b>Most Recent Status:</b> December 2023	<b>Monitoring Measure</b>
<b>Previous Status:</b> September 2023	<b>Monitoring Measure</b>



- Data for this measure is taken from Horizon.
- There has been a slight increase this quarter.
- An increase in the capacity for the homecare market is reflected in the reduction of people waiting for packages of care to begin.

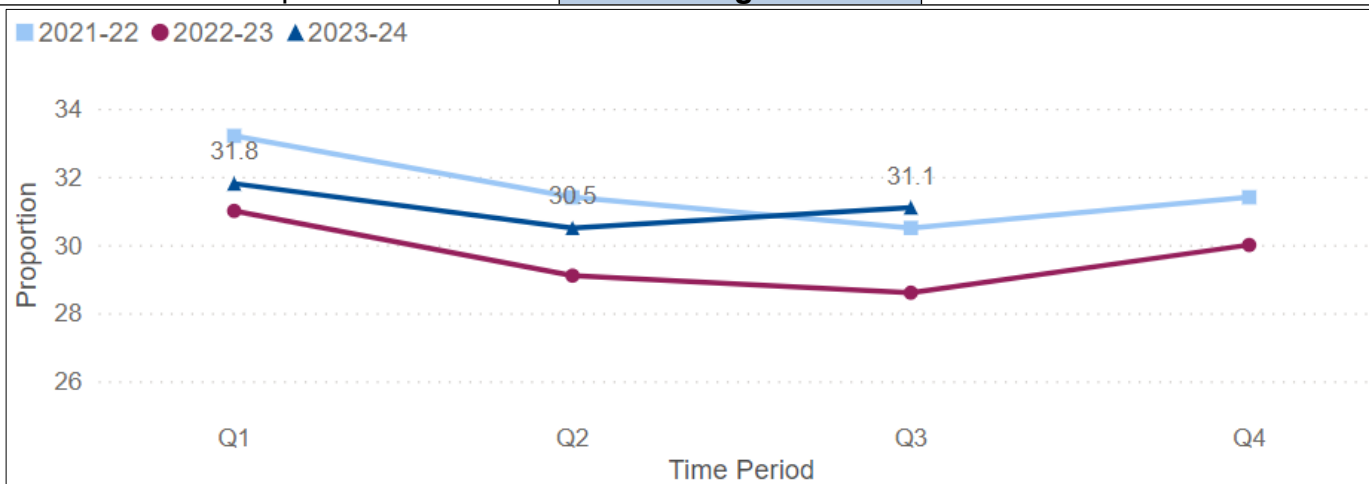
**Proportion of people in receipt of care and support funded by the council supported to remain at home**

**Aim:** Monitoring Measure only.

**UN Sustainable Development Goal:** 3

**Most Recent Status:** December 2023 **Monitoring Measure**

**Previous Status:** September 2023 **Monitoring Measure**



- This figure has remained fairly consistent over a number of years and will be linked with the capacity which the market has available.

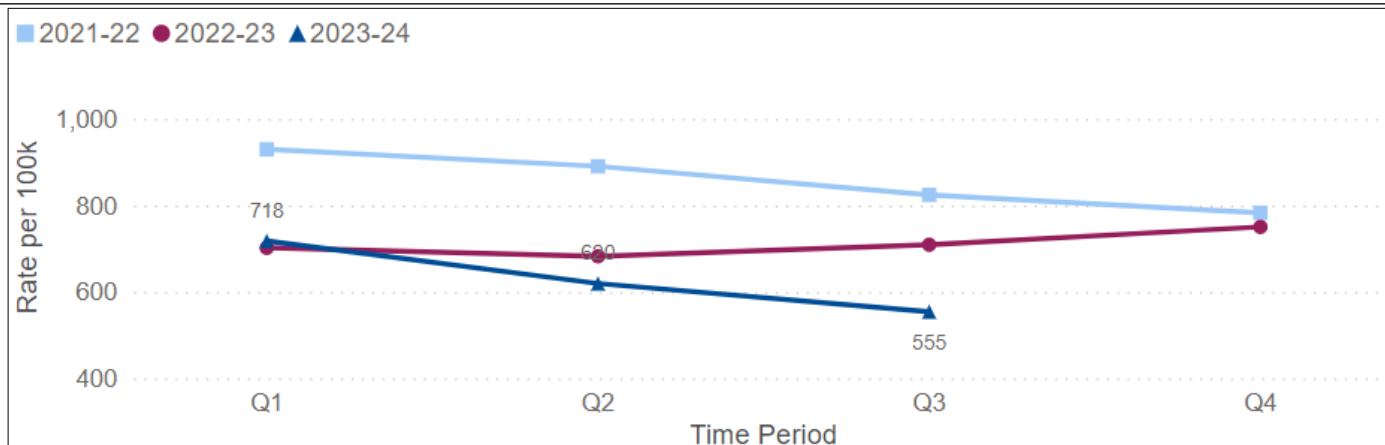
**Rate of permanent admissions to residential & nursing care homes per 100k population (65+)**

**Aim:** Monitoring Measure only.

**UN Sustainable Development Goal:** 3

**Most Recent Status:** December 2023 **Monitoring Measure**

**Previous Status:** September 2023 **Monitoring Measure**



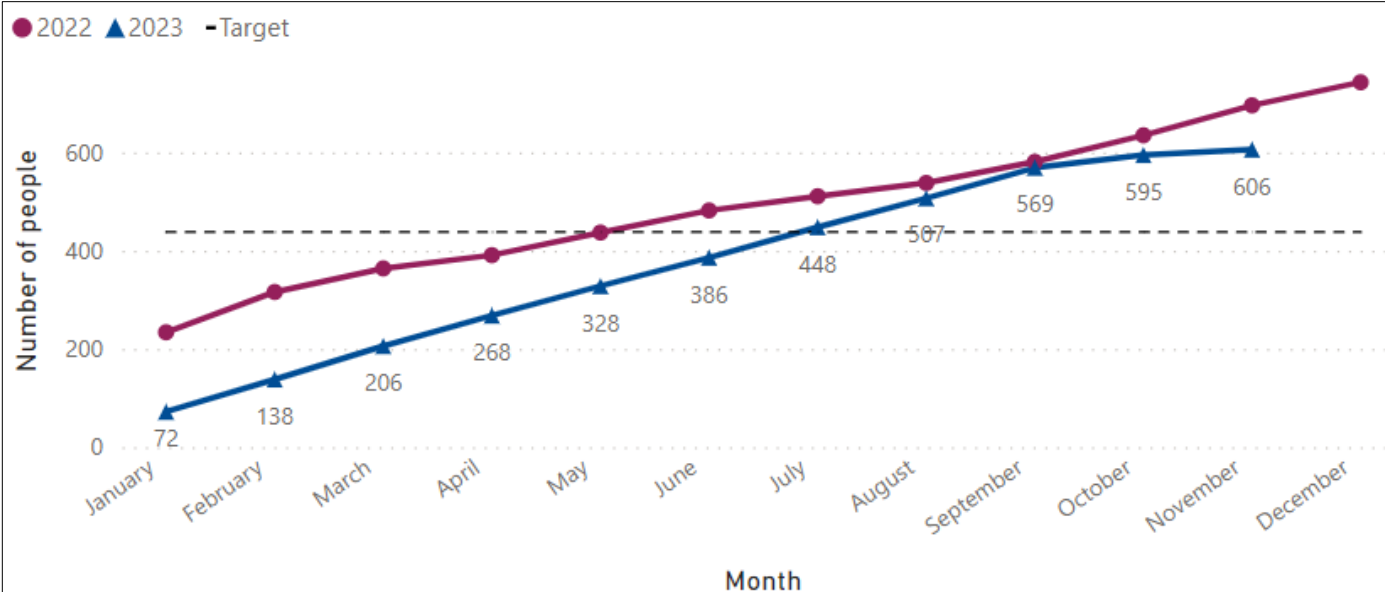
- There is a slight reduction since the last quarter, which may be related to late recording.

**Smoking Quitters – number of people quitting smoking at 4 weeks**

**Aim:** The number of people quitting smoking with specialist support at 4 weeks to reach the end of year target.

**UN Sustainable Development Goal:** 3

<b>Most Recent Status:</b> November 2023	<b>GREEN</b>
<b>Previous Status:</b> September 2023	<b>GREEN</b>



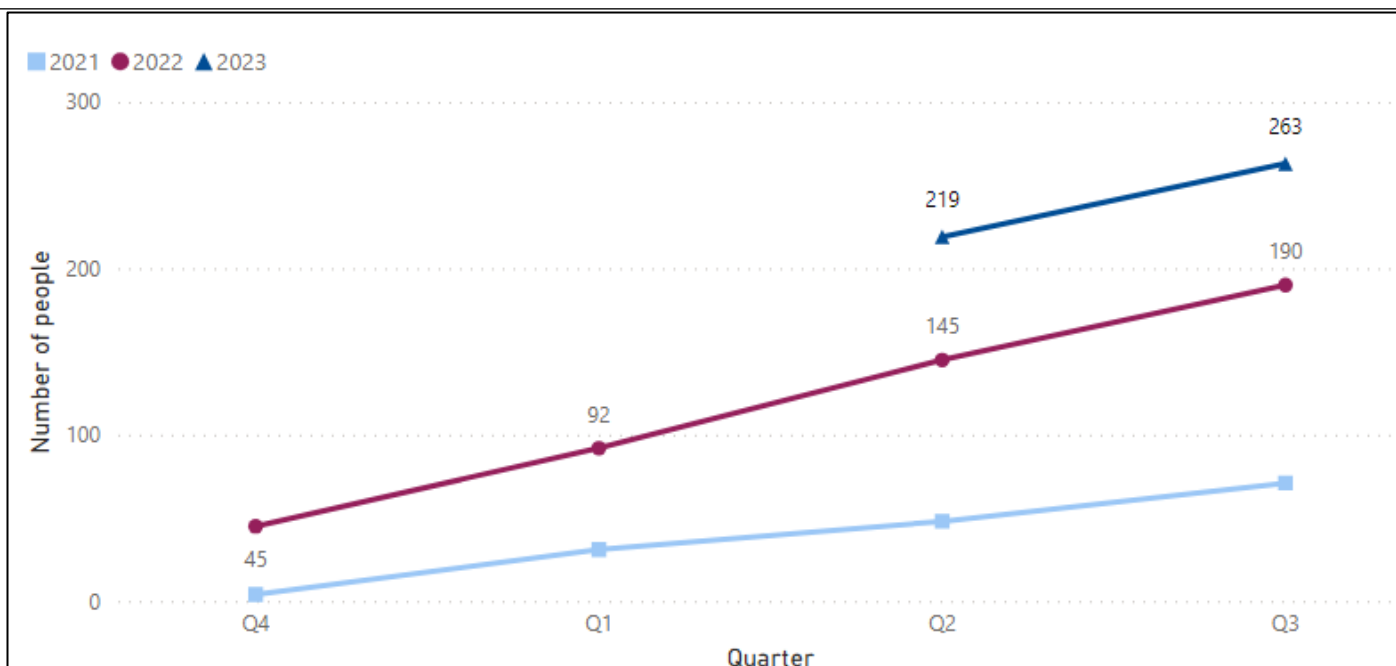
- Data is accurate on 15 December 2023. Please note there can be a data lag of 6 weeks.
- The contract year for the stop smoking service runs from 1 January to 31 December.
- The service is performing well using innovative approaches to support people to quit smoking as part of our overall tobacco control work.

**Number of people achieving weight loss of 5% of body weight in 12 weeks (in commissioned service)**

**Aim:** Number of people achieving 5 percent weight loss reaches/exceeds the end of year target (currently 413).

**UN Sustainable Development Goal:** 3

<b>Most Recent Status:</b> December 2023	<b>AMBER</b>
<b>Previous Status:</b> July 2023	<b>AMBER</b>



- The new Tier 2 Adult Behavioural Weight Management Service went live on the 1 July 2023. There is a 12-week delay in the performance data which means that September to December 2023 figures are not complete.
- As of July 2023, the target is now defined as a participant who has attended at least five sessions out of 12 and who has lost at least five percent of the baseline body weight.
- Due to high demand for this service, that target was increased from 228 to 413.

**Number of adults 25+ taking part in sport or physical activity**

**Aim:** Number of Adults taking part in sport or physical activity reaches/exceeds 16,000 end of year target.

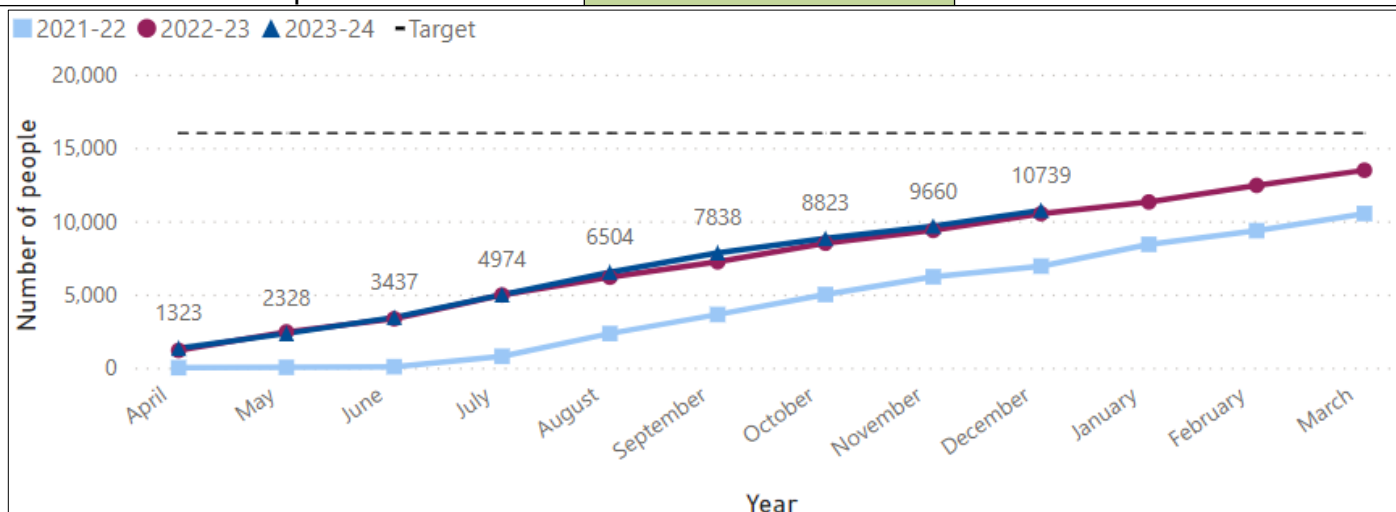
**UN Sustainable Development Goal:** 3

**Most Recent Status:** December 2023

**GREEN**

**Previous Status:** September 2023

**GREEN**



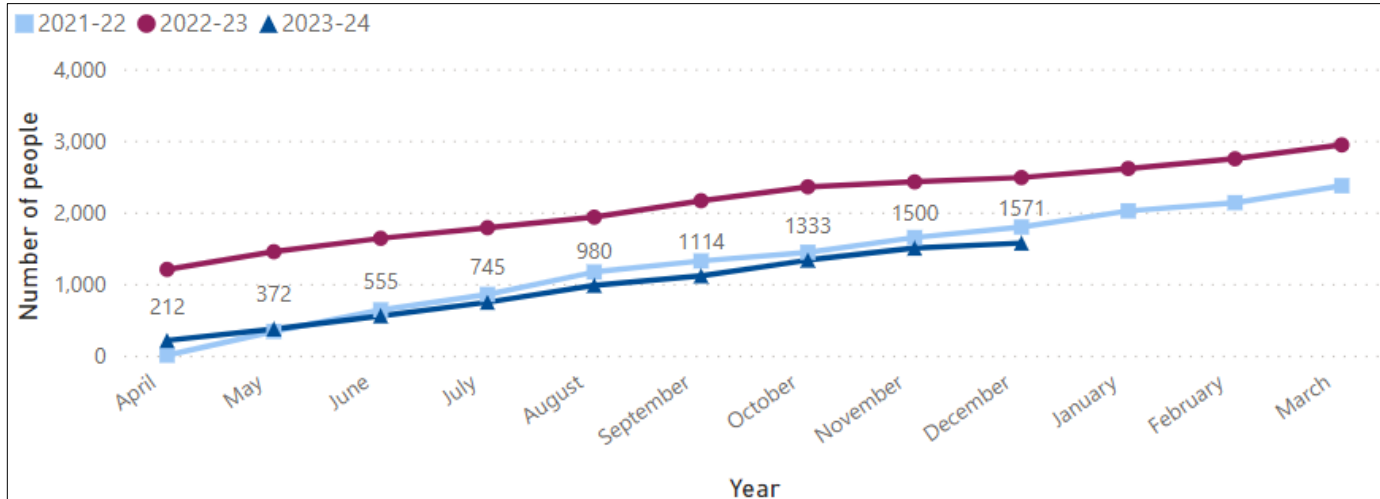
- Weather affected activities in quarter 3, but those taking place included the Christmas Day Parkrun and the schools Continuing Professional Development curriculum dance course.

**Number of juniors and young people (under 25) taking part in sport and play activity**

**Aim:** Number of juniors taking part in sport or physical activity increases.

**UN Sustainable Development Goal:** 3

<b>Most Recent Status:</b> December 2023	<b>Monitoring Measure</b>
<b>Previous Status:</b> September 2023	<b>Monitoring Measure</b>



- Weather affected activities in quarter 3.
- Data shows a continuing decline in junior parkrun attendees.
- Fewer bikeability sessions took place in the quarter due to the Christmas holidays.
- The Duke of Edinburgh programme continues.

### Successful completion of alcohol treatments

**Aim:** Successful completion of treatment to exceed the end of year target.

**UN Sustainable Development Goal:** 3

<b>Most Recent Status:</b> September 2023	<b>GREEN</b>
<b>Previous Status:</b> June 2023	<b>GREEN</b>



- The data captured in the National Drug Treatment Monitoring System shows only structured treatment outcomes.
- The service is increasing capacity and treatment outcomes with increased grant funding from the Department of Health and Social Care.
- Quarter 3 2023-24 data is due to be published on 22 Feb 2024 and will be included in Quarter 4.

## Service Updates - Key Aspirations and Ongoing Business

### The following activity supports UN Sustainable Development Goal 3:

The Independent Living Strategy was presented to Cabinet on 11 January 2024 for approval and adoption.

There has been focus on embedding the mental wellbeing plan through a multi-sector partnership workshop.

The older persons fall prevention booklet has been published and distributed across the Island for residents to pick up (GP surgeries, pharmacies, and community venues etc).

The Island Drug and Alcohol delivery plan has been developed with key partners, with a focus on increasing uptake of support services, early intervention and upskilling the workforce to provide brief advice with the aim of reducing alcohol consumption.

Work continues jointly with colleagues at an Integrated Care System (ICS) level regarding real time surveillance data monitoring. This had led to several incidents being followed up with partners to ensure all support available is offered in a timely way.

Public Health have worked with wider partners to produce and cascade information for parents/carers via secondary school educational settings that detail the risks of vaping for children, outline the steps Public Health are taking to address this issue and practical steps that parents/carers can take to prevent children taking up vaping. It continues to be important to balance the message that whilst vapes can be a useful quit aid for adults who smoke, young people and non-smokers should not vape.

Due to the success of the mobilisation of the Tier 2 Weight Management programme and high demand, Public Health have increased capacity of provision for contract year 1.

Alongside partners Energise Me and the Sports Development Team, Public Health coordinated the autumn 'We Can Be Active Isle of Wight' network in October, bringing together stakeholders working to deliver the Hampshire and Isle of Wight 'We Can Be Active' strategic goals.

The contract for the Hampshire County Council, Isle of Wight Council, Portsmouth City Council and Southampton City Council (HIPS) Integrated Sexual and Reproductive Health Service has been awarded to Solent NHS Trust. The new contract will commence on 1<sup>st</sup> April 2024 for a period of up to 9 years. Mobilisation has commenced and includes a transformation programme to ensure an effective and agile service for Island residents, focusing on prevention and improving access to reduce health inequalities. The clinical front door has improved access for Isle of Wight residents following the Systems Thinking roll out, with residents successfully accessing the service increasing from an average of 12.6 percent to 74.4 percent per day. Subsequently, 77 percent of callers are calling only once and having their clinical needs met remotely. The Sexual Health Service IOW team were nominated for a Solent NHS Trust Heart award by a patient for providing excellent, friendly, person-centred support.

Self-harm support services have been commissioned and are being monitored as part of a joint ICS project. Further funding was secured in December to allow successful elements of this work to continue.

### The following activity supports UN Sustainable Development Goal 16:

The Island Strategic Drug and Alcohol Partnership met in person in October. This meeting consisted of presentations from both commissioned and voluntary sector partners with a breakout workshop element to engage all partners, discussing unmet need and how partners can work together to ensure inclusivity and to improve support for residents.

A joint Mental Health Alliance and Mental Health and Suicide Prevention Partnership workshop was held in November, which involved partners from both the statutory and voluntary (community groups and charities) sectors. The workshop focused on improving access to support and suicide prevention. Meetings with individual organisations commenced in December to ensure we capture their input to the priorities in the multi-sector owned Island Mental Wellbeing Plan. This will support strategic oversight of progress of the plan going forward.

## Strategic Risks

<b>Insufficient staffing capacity and skills within adult social care and housing services.</b>		
<b>Assigned to: Director of Adult Social Care</b>		
<b>Inherent score</b>	<b>Target score</b>	<b>Current score (November 23)</b>
<b>14 HIGH</b>	<b>6 LOW</b>	<b>6 LOW</b>
<b>Previous scores</b>		
<b>September 23</b>	<b>June 23</b>	<b>March 23</b>
<b>8 MEDIUM</b>	<b>8 MEDIUM</b>	<b>8 MEDIUM</b>
<b>Reduction in risk score</b>		

<b>Failure to identify and effectively manage situations where vulnerable adults are subject to abuse.</b>		
<b>Assigned to: Director of Adult Social Care and Assistant Director of Operations</b>		
<b>Inherent score</b>	<b>Target score</b>	<b>Current score (November 23)</b>
<b>16 VERY HIGH</b>	<b>6 LOW</b>	<b>8 MEDIUM</b>
<b>Previous scores</b>		
<b>September 23</b>	<b>June 23</b>	<b>March 23</b>
<b>8 MEDIUM</b>	<b>8 MEDIUM</b>	<b>11 MEDIUM</b>
<b>No change to risk score</b>		

<b>Failure to champion the ‘place-based agenda’ within the Integrated Care System (ICS) to ensure that the needs of our citizens are being appropriately considered within the Integrated Care Board (ICB) agenda.</b>		
<b>Assigned to: Director of Adult Social Care</b>		
<b>Inherent score</b>	<b>Target score</b>	<b>Current score (November 23)</b>
<b>16 VERY HIGH</b>	<b>MEDIUM 9</b>	<b>16 VERY HIGH</b>
<b>Previous scores</b>		
<b>September 23</b>	<b>June 23</b>	<b>March 23</b>
<b>N/A</b>	<b>N/A</b>	<b>N/A</b>

<b>New risk</b>
-----------------

<b>Independent Social Care Sector Sustainability (care Homes and Home Care)</b>
---------------------------------------------------------------------------------

<b>Assigned to: Director of Adult Social Care</b>
---------------------------------------------------

Inherent score	Target score	Current score (November 23)
16 VERY HIGH	6 LOW	9 MEDIUM
Previous scores		
September 23	June 23	March 23
9 MEDIUM	9 MEDIUM	12 HIGH
No change to risk score		

<b>Additional demands placed upon the Isle of Wight Council and partners owing to pandemic flu or similar large-scale outbreak.</b>
-------------------------------------------------------------------------------------------------------------------------------------

<b>Assigned to: Director of Public Health</b>
-----------------------------------------------

Inherent score	Target score	Current score (November 23)
16 VERY HIGH	12 HIGH	12 HIGH
Previous scores		
September 23	June 23	March 23
12 HIGH	12 HIGH	12 HIGH
Risk score is consistent		